

# Responding to Trends in Management

Dawn Stevens

President, Comtech Services

Director, CIDM



# Participants

Genetec

FireEye

QUALCOMM

FedEx

CRAY

ARRIS

workday.

CIRRUS LOGIC

MasterCard

BROCADE

GENESYS

DeltaHawk

GRUNDFOS

Hewlett Packard  
Enterprise

NantHealth

serviceNOW

Hypertherm

Omnicell

Siemens PLM Software  
SIEMENS

Schneider  
Electric

JUNIPER  
NETWORKS

FIS

SWIFT

intel

NEXTGEN  
HEALTHCARE

redhat.

PACCAR

DELL EMC

SIGMA  
Technology

KOMATSU  
EQUIPMENT

CYMER.

GE Healthcare

WIND

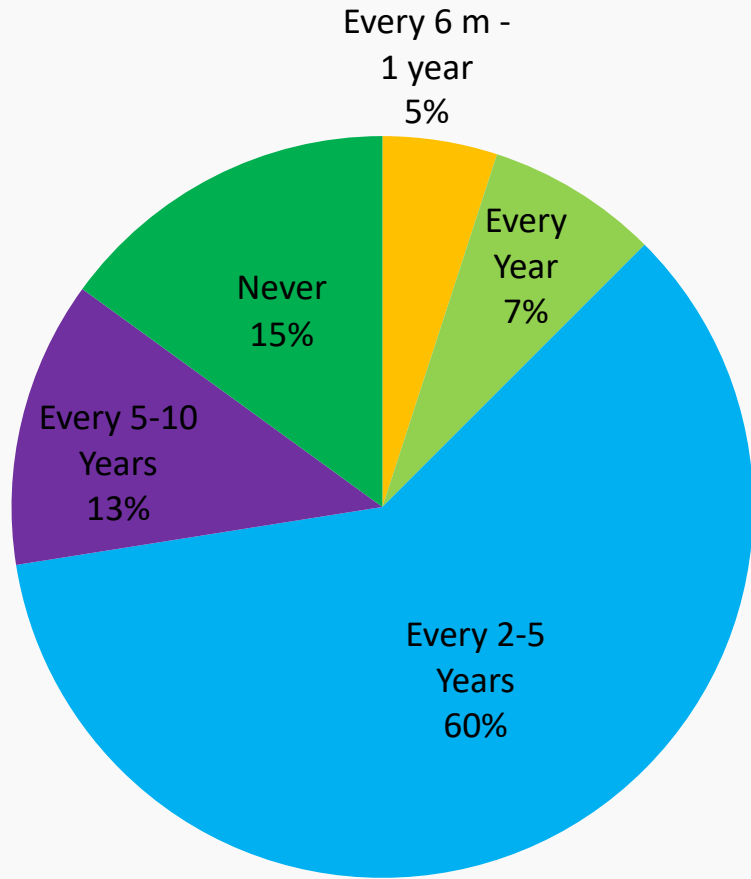
Sony  
Entertainment  
Network

JOHN DEERE

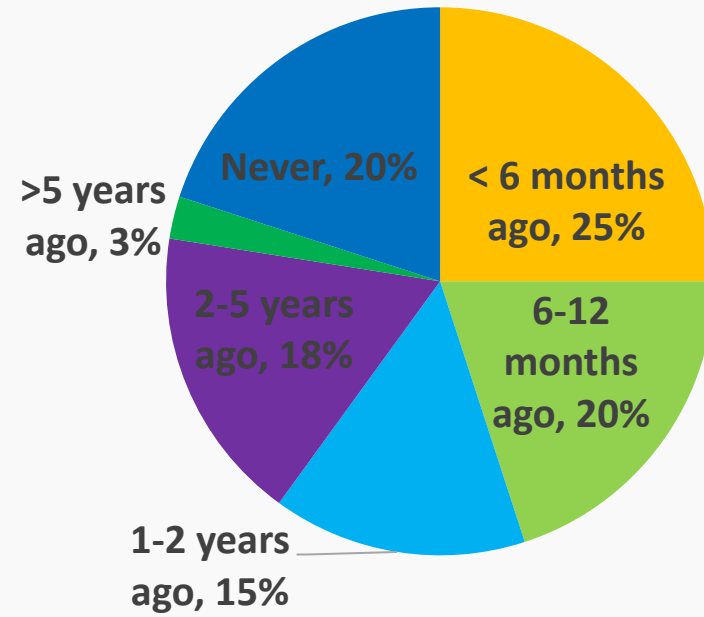
INDIANA UNIVERSITY

splunk

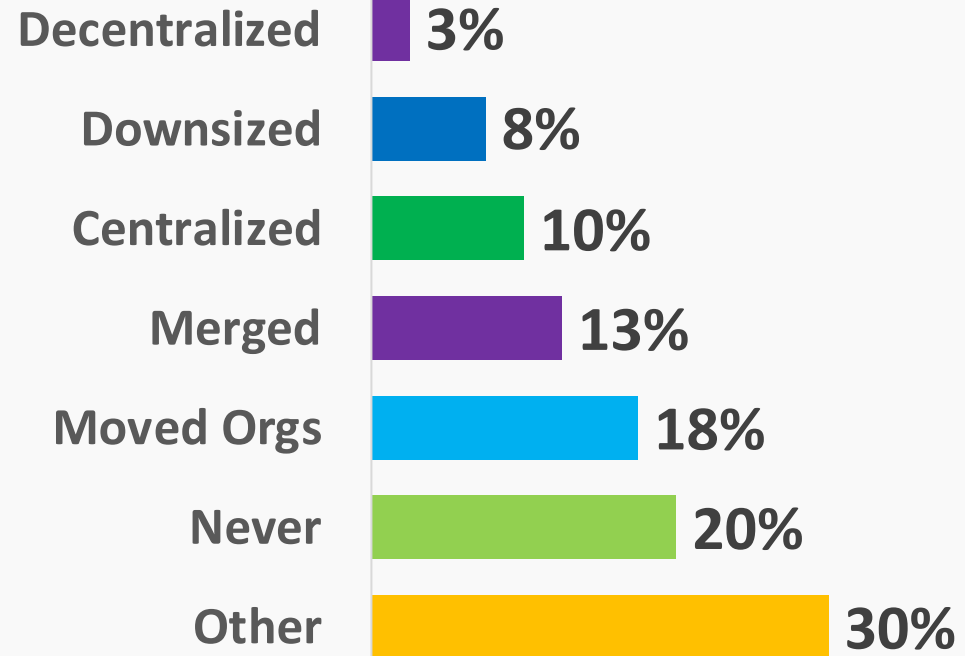
# Change is a Constant

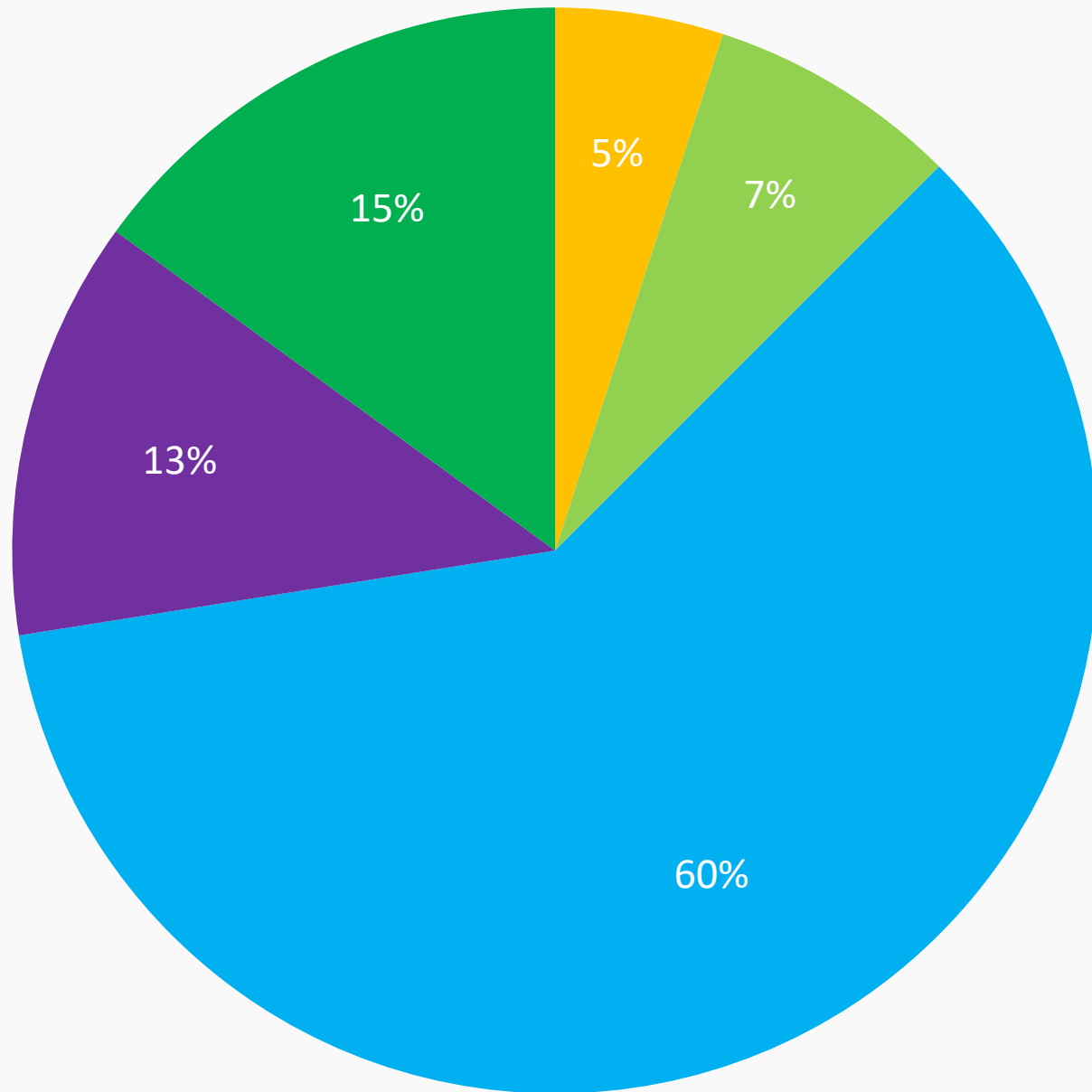


Frequency of Reorgs



Last reorg





- Every 6 m - 1 year
- Every Year
- Every 2-5 Years
- Every 5-10 Years
- Never

# Organizational Composition



Writer  
95%



Editor  
67%



Information Architect  
55%



Graphic Artist  
50%



Product Manager  
55%



UX Designer  
13%



Centralized  
67.5%

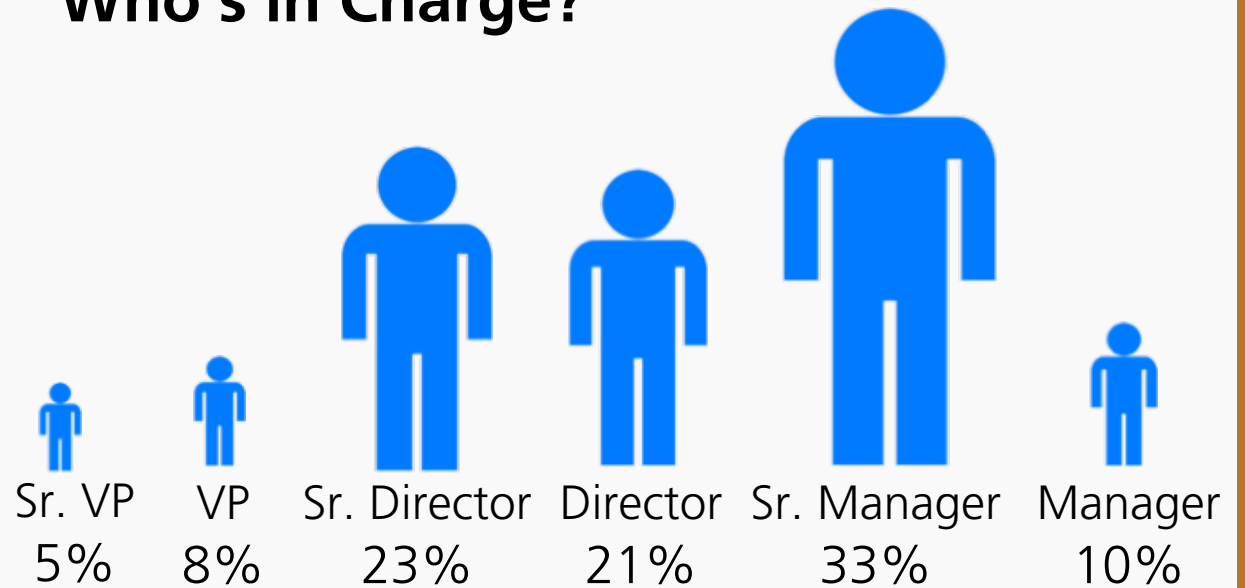


Hybrid  
22.5%



Decentralized  
10.5%

## Who's in Charge?





Centralized  
67.5%



Hybrid  
22.5%



Decentralized  
10.5%



# Organizational Size and Ratios



< 10 people  
15.9%



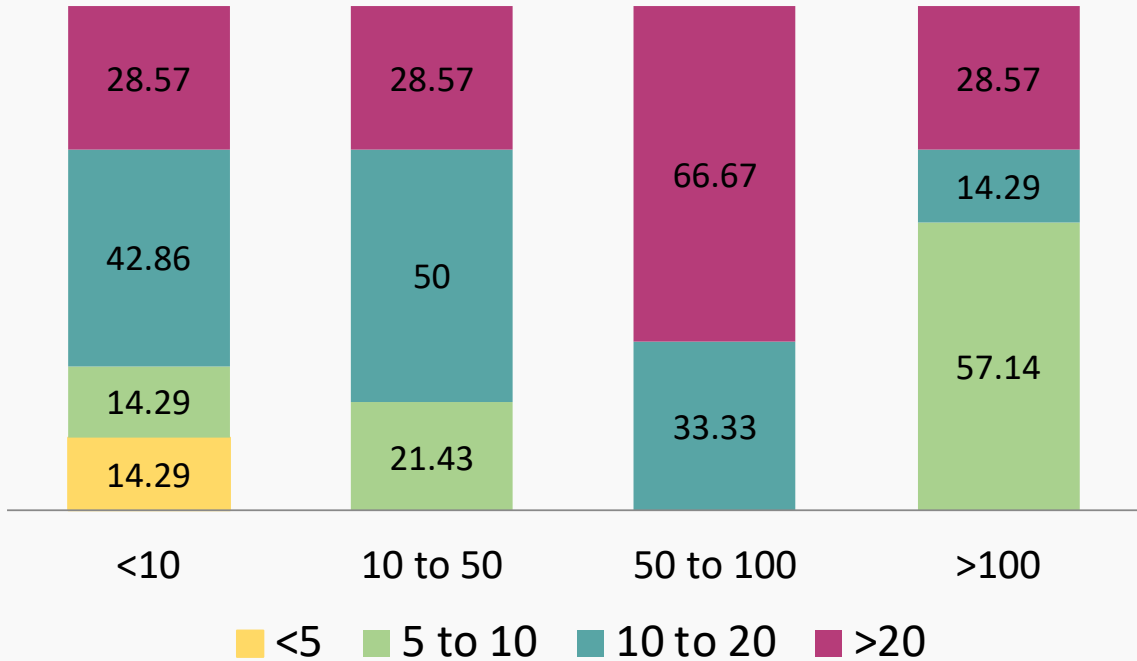
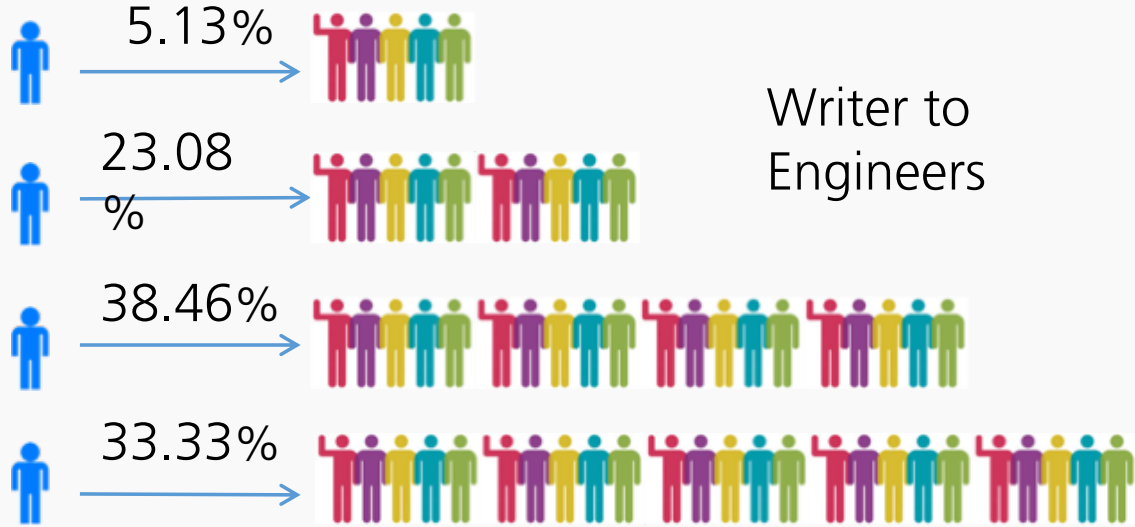
10-50 people  
38.46%



50-100 people  
7.69%

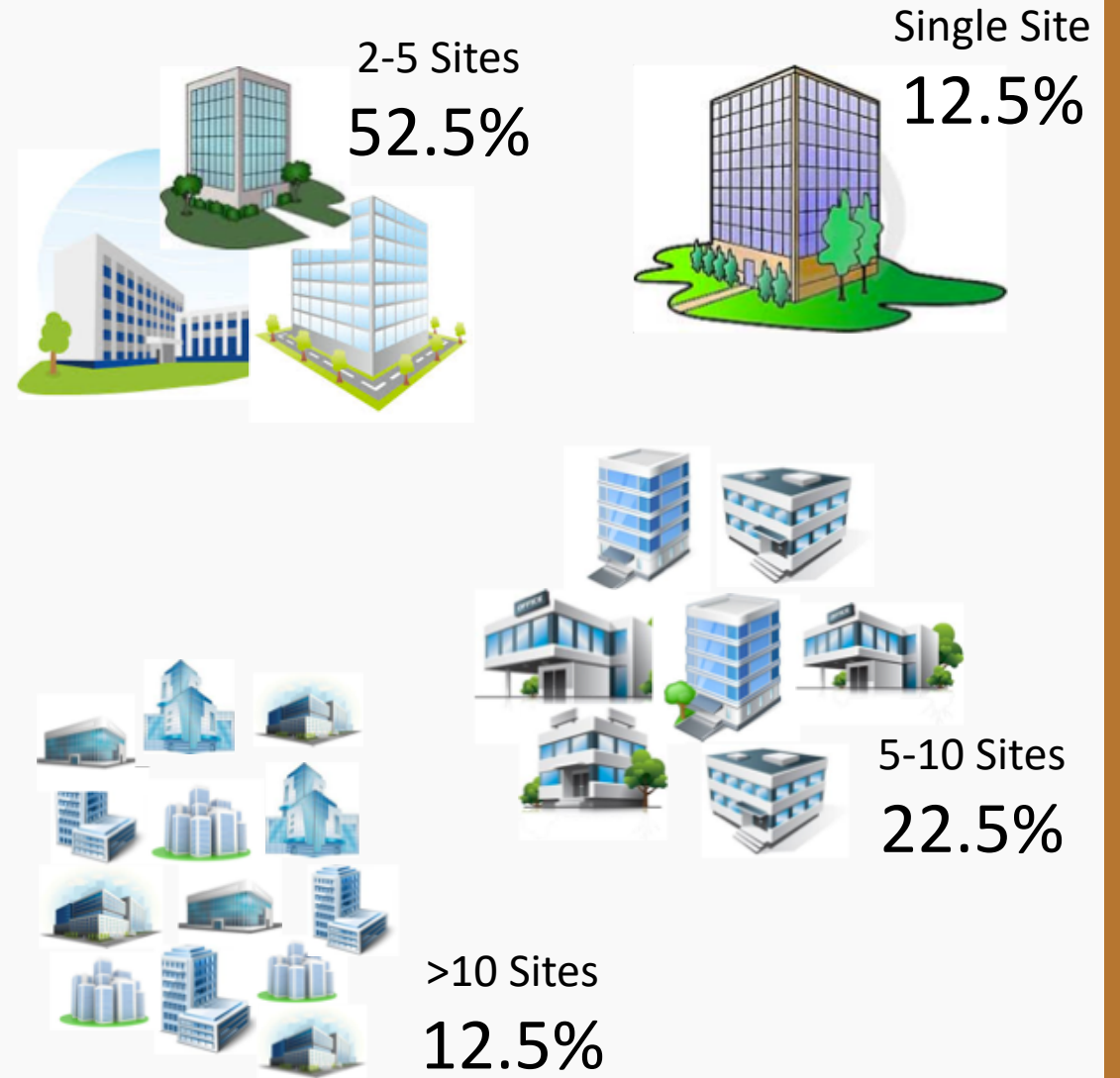
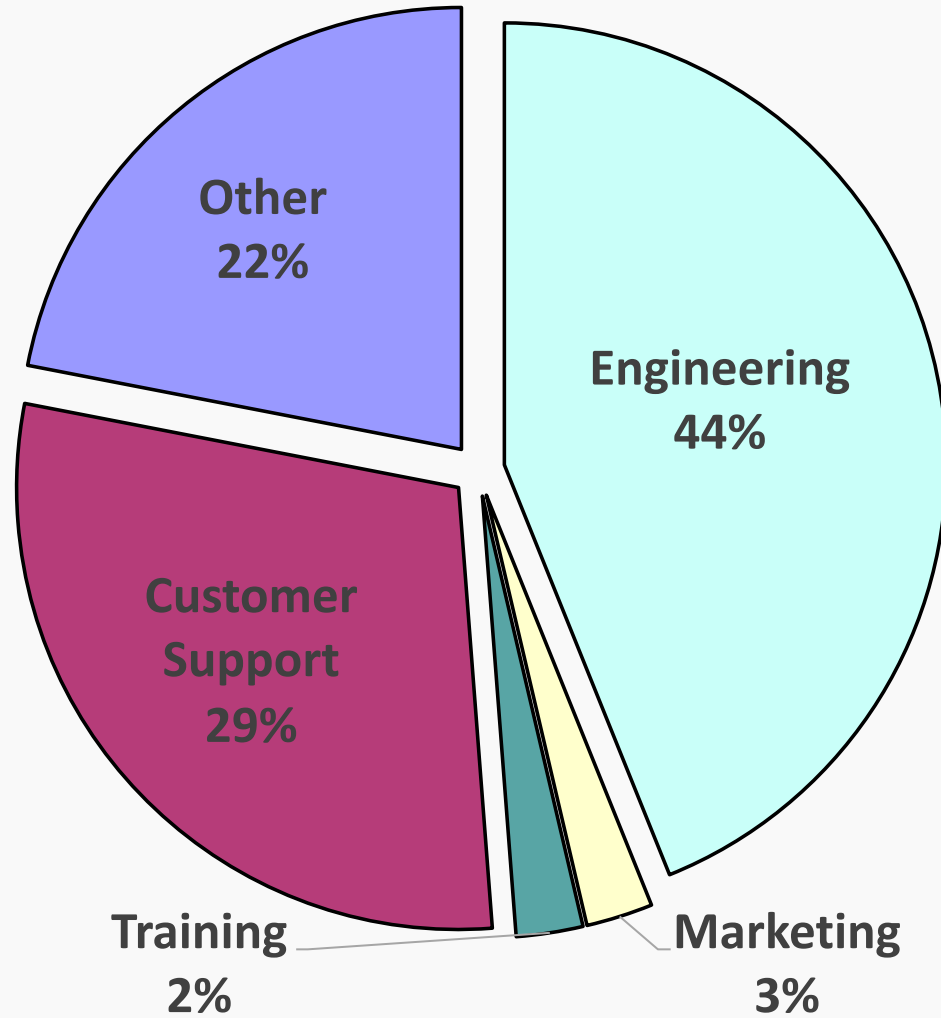


>100 people  
17.95%





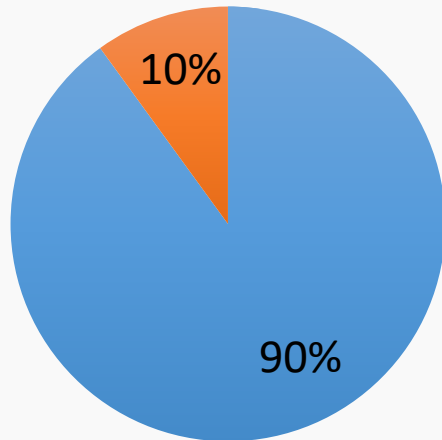
# Location



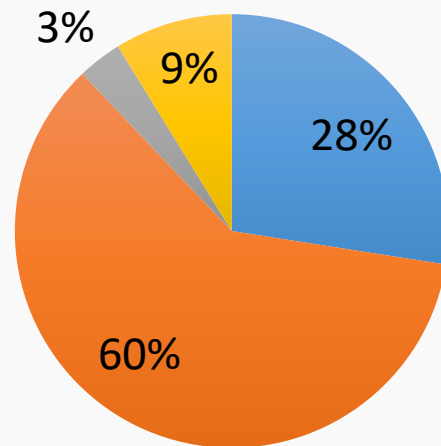


# Collaboration

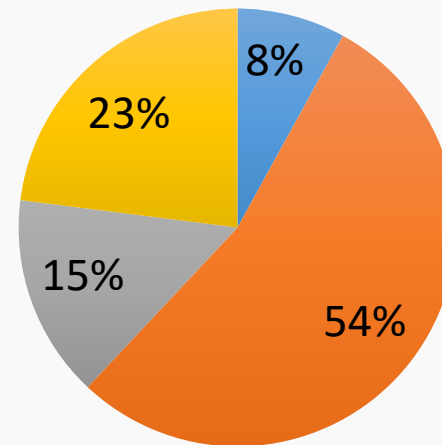
## Engineering



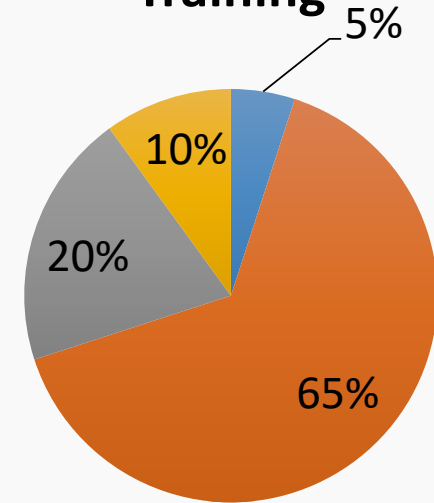
## Support



## Marketing



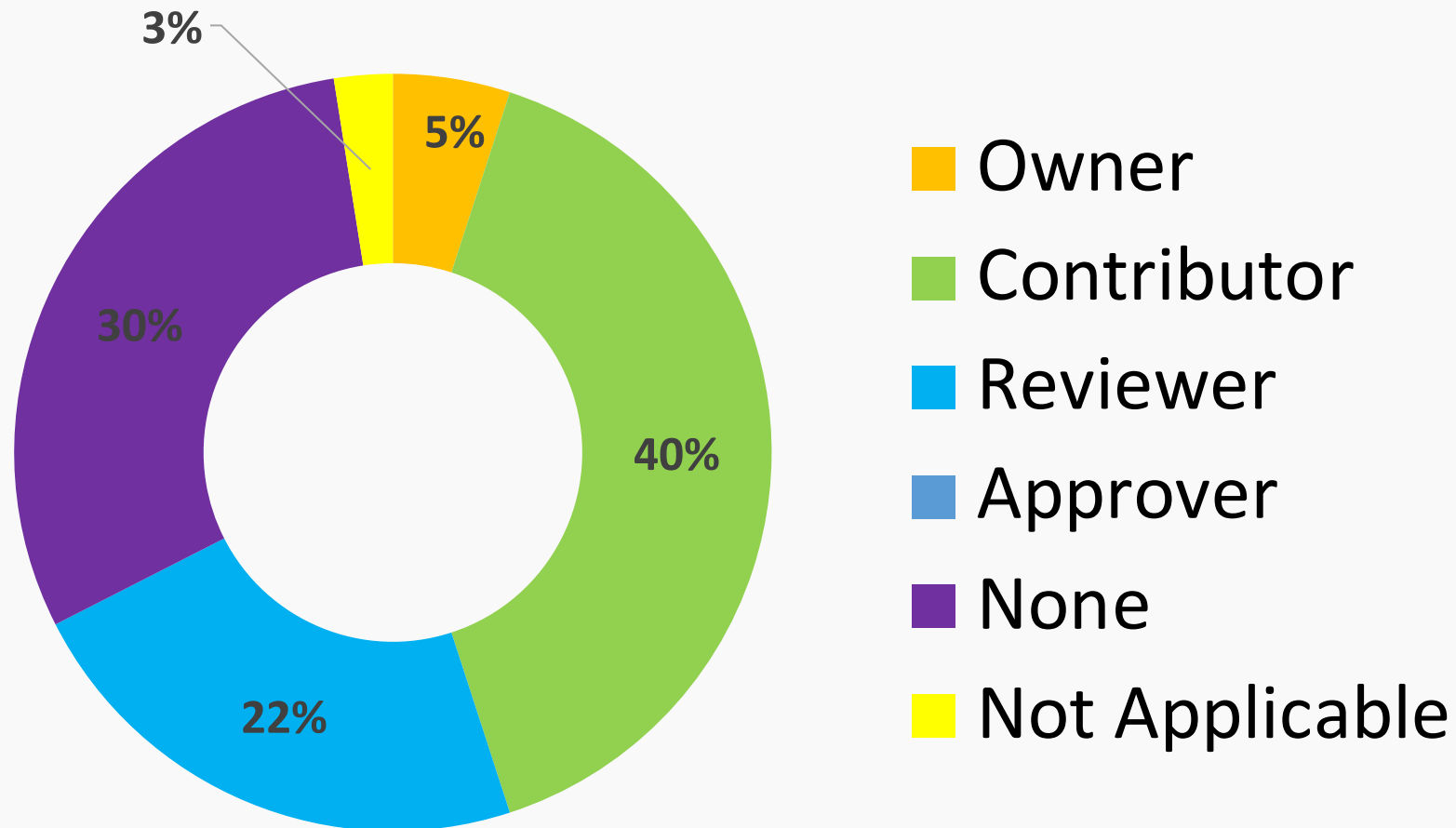
## Training



- Daily
- Occasionnally
- Rarely
- None

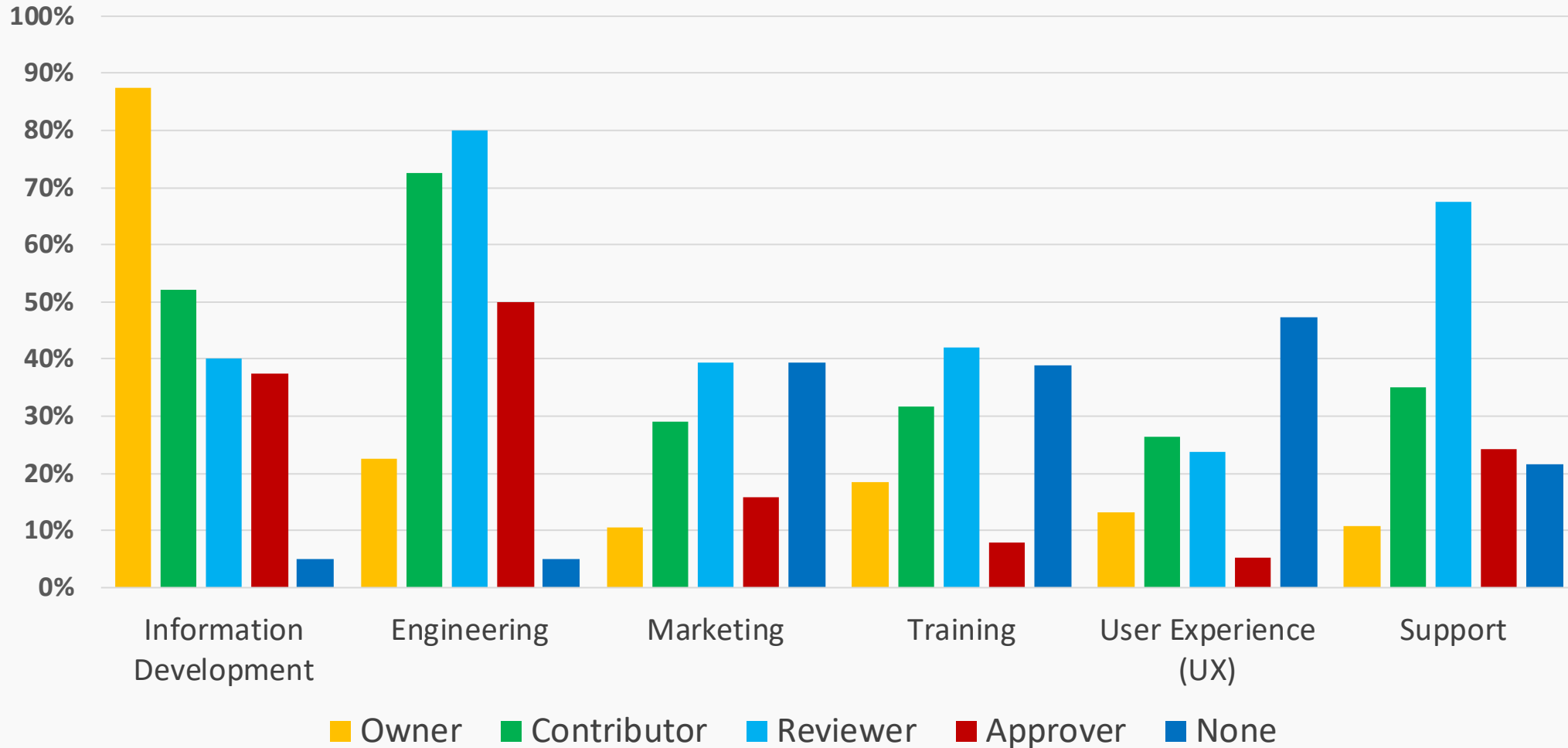
# Roles and Responsibilities

## Information Development Role in GUI Content



# Roles and Responsibilities

## Role in User-Facing Content Development



# Importance of Information Development



Important contributor to success and reputation: 56.41%



Necessary but without impact: 25.64%



Unnecessary and without impact: 7.69%



Detractor to success and reputation: 2.56%



Influence is unknown: 7.69%